

Blackburn Way, Hounslow

Asking Price: £285,000
Leasehold



your-move.co.uk

16 Blackburn Way, Hounslow
Asking Price: £285,000

Lovely top floor purpose built flat located in a quiet residential development. In brief offers open plan living/dining room/kitchen, 2 double bedrooms, modern bathroom w/c & balcony. Other benefits include residents parking and communal gardens. EPC Grade C.

Location

The property is situated in a cul de sac in Hounslow and accessible to Hounslow High Street with Central/West Tube Stations for your convenience as well as the A4 and M4 road links nearby. Other benefits are numerous local bus routes served from Hounslow bus garage.

Living/Dining Room
15'9" x 9'10" (4.8m x 3m)

Kitchen
12' x 5'7" (3.66m x 1.7m)

Bedroom 1
14'4" x 8'11" (4.37m x 2.72m)

Bedroom 2
14'1" x 8' (4.3m x 2.44m)

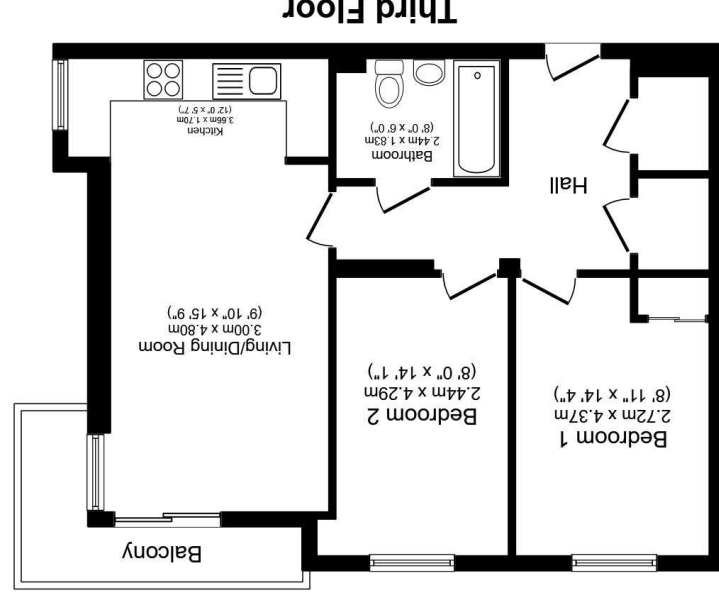
Bathroom W/C
8' x 6' (2.44m x 1.83m)

Your-Move.co.uk Ltd., 01864469, Newcastle House Albany Court, Newcastle Business Park, Newcastle Upon Tyne, NE4 7YB

All measurements are approximate and have been taken using a laser tape measure and therefore, may be subject to a small margin of error.

Flooplan Clause: measurements are approximate. Not to Scale. For illustrative purposes only.

We may refer you to recommended providers of ancillary services such as Conveyancing, Mortgages, Insurance and Surveying. We may receive a referral fee for recommending their services. You are not under any obligation to use the services of the recommended provider, which may also be an associated company of Your Move.



Third Floor

Total floor area 59.0 sq. m. (635 sq. ft.) approx
This floor plan is for illustrative purposes only. It is not drawn to scale. Any measurements, floor areas (including any total floor area), openings and orientation are approximate. No details are guaranteed, they cannot be relied upon for any purpose and they do not form part of any agreement. No liability is taken for any error, omission or misstatement. A party must rely upon its own inspection(s). Plan produced for Your Move. Powered by www.localagent.com



For full EPC please contact the branch.