

Flat 12, Hill House, Defence Close,
London

Asking Price: £255,000

 **YOUR MOVE**

your-move.co.uk

Flat 12, Hill House, Defence Close, London
Asking Price: £255,000

A lovely two bedroom apartment which has stunning views of the River Thames. The property comprises of an en-suite to master bedroom, communal gardens and residential parking.

Description

No onward chain, this two bedroom second floor flat with balcony and river views. With gas central heating and double glazing. Accommodation comprises entrance hallway, lounge/diner, kitchen, two bedrooms, En-suite to the master bedroom and additional bathroom/WC. This property is situated in West Thamesmead overlooking with River views. Close to Woolwich for the DLR. EPC Grade B.

Location

This apartment is overlooking the river Thames and close to Woolwich for the DLR and Abbey Wood has the Crossrail pending for the future. The nearest shops are at central Thamesmead. This property lies within the ROYAL LONDON BOROUGH OF GREENWICH.

Second Floor

Entrance To Development

Entrance Hall

Balcony With River Views

Lounge/Diner
3.68 x 1.91

Kitchen
2.4 x 1.93

Master Bedroom
5.09 x 2.51

Ensuite Shower Room/W.c.
2.33 x 1.61

Bedroom Two
3.77 x 2.81

Bathroom/W.c.
2.19 x 2.08

Parking Space

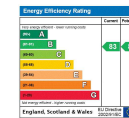
Stairs And Lift To All Floors

Your-Move.co.uk Ltd., 01864469, Newcastle House Albany Court, Newcastle Business Park, Newcastle Upon Tyne, NE4 7YB

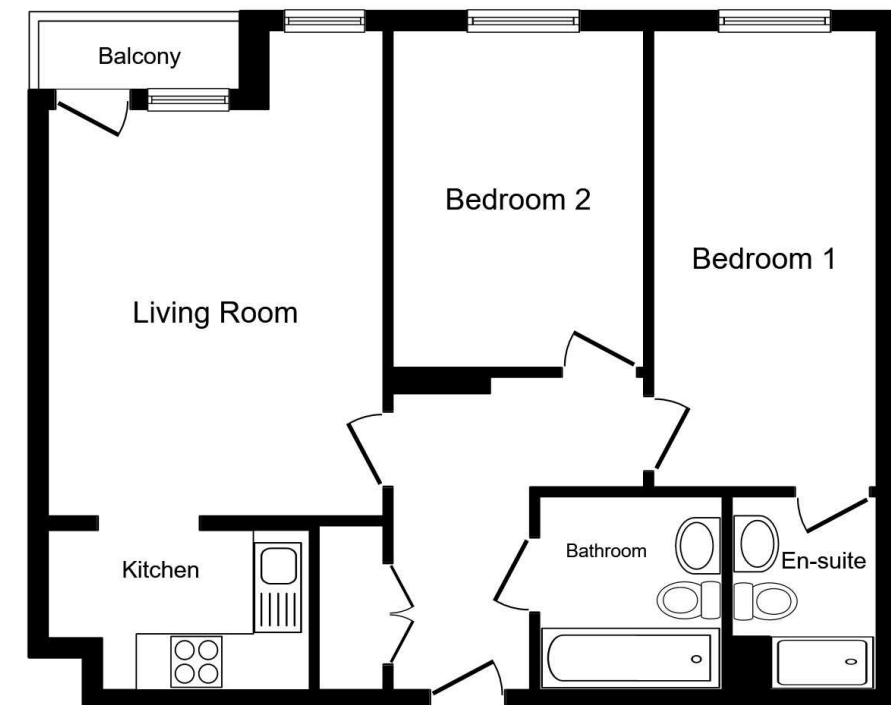
All Measurements
All Measurements are Approximate.

Laser Tape Clause
All measurements have been taken using a laser tape measure and therefore, may be subject to a small margin of error.

Floorplan Clause
Measurements are approximate. No to Scale. For illustrative purposes only.



For full EPC please contact the branch.



Second Floor

Total floor area 60.0 sq. m. (646 sq. ft.) approx
This floor plan is for illustrative purposes only. It is not drawn to scale. Any measurements, floor areas (including any total floor area), openings and orientation are approximate. No details are guaranteed, they cannot be relied upon for any purpose and they do not form part of any agreement. No liability is taken for any error, omission or misstatement. A party must rely upon its own inspection(s).
Plan produced for Your Move. Powered by www.localagent.com