



Wheatsheaf Lane, Wigton,
Cumbria

**Offers Over: £40,000
Leasehold**



YOUR MOVE

your-move.co.uk

Wheatsheaf Lane, Wigton, Cumbria
Offers Over: £40,000 Leasehold

Benefiting from double glazing and electric heating this spacious first floor flat comprises a living room with doors to the dining room, a double bedroom and a single bedroom both overlooking Wigton town, a kitchen with a range of fitted units and plumbing for a washing machine and a bathroom/wc. The property is currently let at £350 pcm. EPC rating E.

Description

* INVESTMENT OPPORTUNITY. NO ONWARD CHAIN * Benefiting from double glazing and electric heating this spacious first floor flat comprises a spacious living room with doors to the dining room, a double bedroom and a single bedroom both overlooking Wigton town, a kitchen with a range of fitted units and plumbing for a washing machine and a bathroom/wc. EPC rating E.

Location

The popular market town of Wigton is situated approximately 6 miles North of the Lake District National Park, 5 miles from the Solway coast and 10 miles from the border city of Carlisle. Wigton town offers a varied range of social, retail and leisure facilities and has road and rail links to east and west Cumbria.

Our View

This spacious property is located in Wigton town centre and convenient for local amenities, the train station and bus stops to east and west Cumbria. The property is well worthy of a viewing to appreciate the accommodation and the location.

Living Room/Dining Room

Living Area

12'10" x 11'2" (3.9m x 3.4m)

Dining Area

15'5" x 10' (4.7m x 3.05m)

Inner Hall

Kitchen

13'9" x 7'3" (4.2m x 2.2m)

Bedroom

14'7" x 10'5" (4.45m x 3.18m)

Bedroom

9'6" x 6'9" (2.9m x 2.06m)

Bathroom/WC

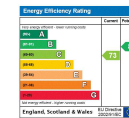
8'10" x 5'7" (2.7m x 1.7m)

Your-Move.co.uk Ltd., 01864469, Newcastle House Albany Court, Newcastle Business Park, Newcastle Upon Tyne, NE4 7YB

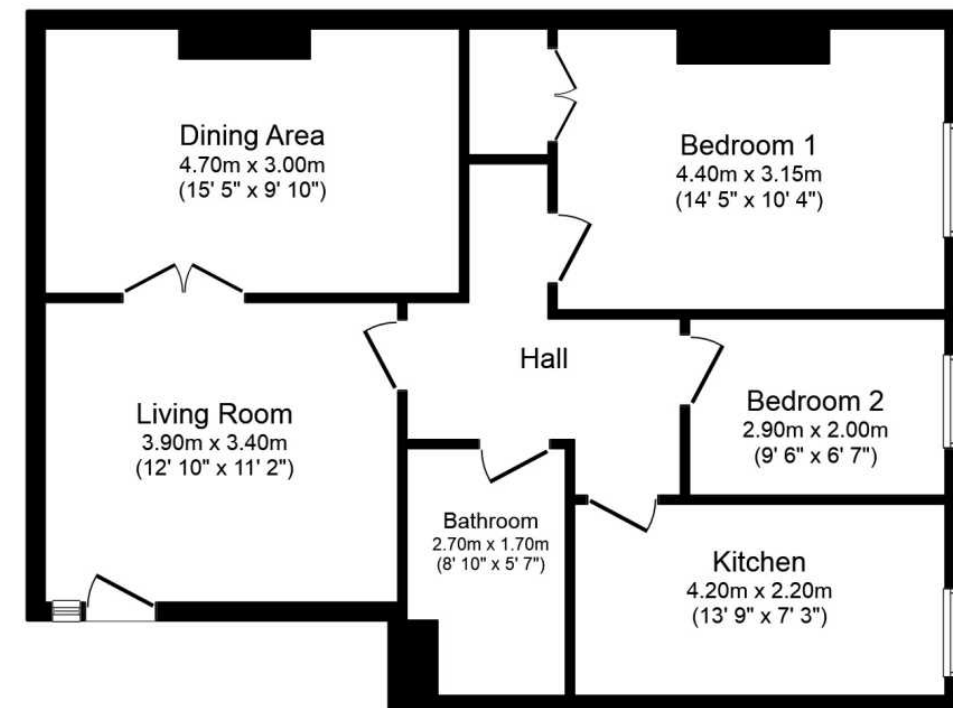
All Measurements
All Measurements are Approximate.

Laser Tape Clause
All measurements have been taken using a laser tape measure and therefore, may be subject to a small margin of error.

Floorplan Clause
Measurements are approximate. Not to Scale. For illustrative purposes only.



For full EPC please contact the branch.



Floor Plan

Total floor area 73.0 sq. m. (786 sq. ft.) approx

This plan is for illustration purposes only and may not be representative of the property. Plan not to scale.

Powered by audioagent.com