

Pennine View Close, Carlisle, CA1

£575 per month

Furnished



your-move.co.uk

Pennine View Close, Carlisle, CA1
£575 per month **Furnished**

AVAILABLE SEPTEMBER A furnished, second floor, two bedroom apartment. The electric heated and double glazed accommodation briefly comprises communal entrance with stairs to the second floor, entrance hall, dining lounge with patio doors to balcony with open aspect views, modern kitchen with integrated appliances, master bedroom with en-suite shower room, bedroom and three piece bathroom suite. Allocated parking space. EPC-E Council tax B

Description

Location

Our View

Communal Entrance

Second Floor

Entrance Hall

Dining Lounge

Kitchen

Bedroom

En-suite Shower Room

Bedroom

Outside

Floorplan

Bathroom

Your-Move.co.uk Ltd., 01864469, Newcastle House Albany Court,
Newcastle Business Park, Newcastle Upon Tyne, NE4 7YB

All Measurements
All Measurements are Approximate.

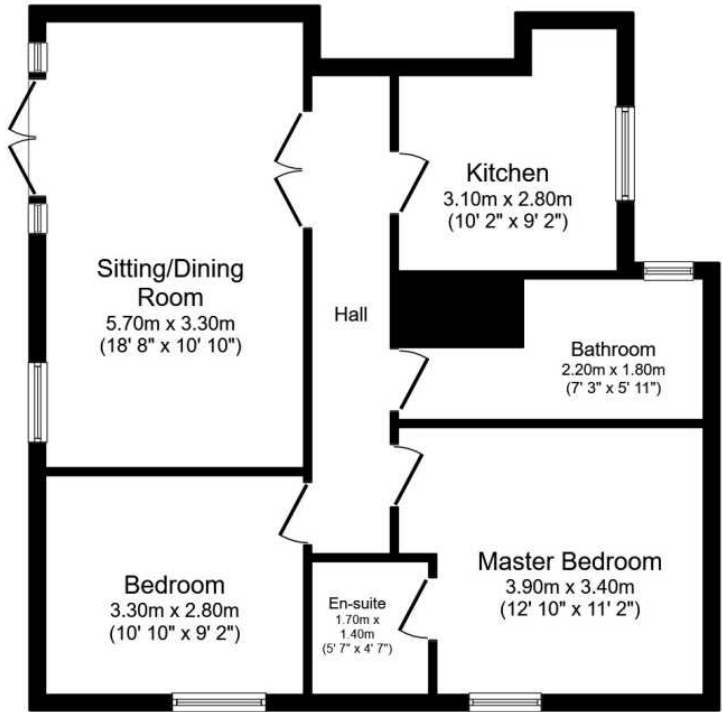
We may refer you to recommended providers of ancillary services such as Conveyancing, Mortgages, Insurance and Surveying. We may receive a referral fee for recommending their services. You are not under any obligation to use the services of the recommended provider, which may also be an associated company of Your Move.

Laser Tape Clause
All measurements have been taken using a laser tape measure and therefore, may be subject to a small margin of error.

Floorplan Clause
Measurements are approximate. Not to Scale. For illustrative purposes only.



For full EPC please contact the branch.



Floor Plan

Total floor area 67.0 sq. m. (721 sq. ft.) approx
This plan is for illustration purposes only and may not be representative of the property. Plan not to scale.

Powered by audioagent.com