

Kings Arms Yard, Market Place,
Wigton, Cumbria

Asking Price: £55,000
Freehold



your-move.co.uk

Kings Arms Yard, Market Place, Wigton, Cumbria

Asking Price: £55,000 Freehold

Comprising of two bedrooms, a spacious living room, a kitchen and a bathroom, this pleasant town centre house is worthy of a viewing to appreciate the accommodation and the location. The property is an ideal investment opportunity and could achieve in the region of £375pcm. EPC rating D.

Floorplan Clause
Measurements are approximate. Not to Scale. For illustrative purposes only.

Location

The market town of Wigton is approximately 12 miles from the border city of Carlisle, 7 miles from the fringe of the Lake District National Park and 10 miles from the Solway Coast. Wigton offers a range of social, retail and leisure facilities and has road and rail links to East and West Cumbria.

Living Room

14'8" x 13' (4.47m x 3.96m)

Kitchen

11'11" x 11' (3.63m x 3.35m)

Bathroom

9'2" x 5' (2.8m x 1.52m)

Bedroom 1

13'3" x 9'1" (4.04m x 2.77m)

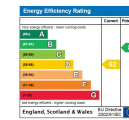
Bedroom 2

9'10" x 5'3" (3m x 1.6m)

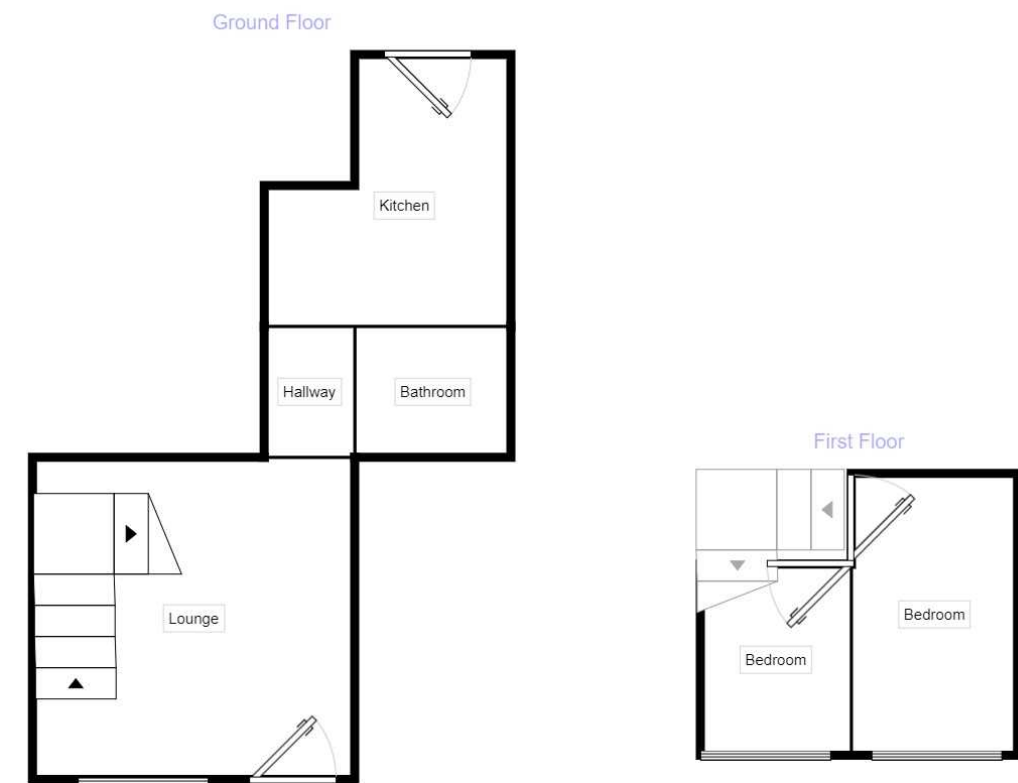
Your-Move.co.uk Ltd., 01864469, Newcastle House Albany Court, Newcastle Business Park, Newcastle Upon Tyne, NE4 7YB

All Measurements
All Measurements are Approximate.

Laser Tape Clause
All measurements have been taken using a laser tape measure and therefore, may be subject to a small margin of error.



For full EPC please contact the branch.



Measurements are approximate. Not to scale. For illustrative purposes only.

We may refer you to recommended providers of ancillary services such as Conveyancing, Mortgages, Insurance and Surveying. We may receive a referral fee for recommending their services. You are not under any obligation to use the services of the recommended provider, which may also be an associated company of Your Move.