

Cumberland Avenue,
Clifton, Swinton, Manchester, M27

£895 per month

Unfurnished



your-move.co.uk

Cumberland Avenue, Clifton,Swinton, Manchester, M27
£895 per month Unfurnished

*** Zero Deposit Scheme Available *** Video Tour Available *** Are you looking for a stylish and modern pad to call home? Then this beautifully decorated, mid terraced home could be the one for you! Unusual for a terrace property, this home boasts a detached Garage and benefits from a sizable rear courtyard. The property has good sized bedrooms, a stylish kitchen and a modern bathroom. This property will not be around for long, you will need to be quick!
EPC Grade C.
Salford City Council...

Description

*** Zero Deposit Scheme Available *** Video Tour Available *** Are you looking for a stylish and modern pad to call home? Then this beautifully decorated, mid terraced home could be the one for you! Unusual for a terrace property, this home boasts a detached Garage and benefits from a sizable rear courtyard. The property has good sized bedrooms, a stylish kitchen and a modern bathroom. This property will not be around for long, you will need to be quick!
EPC Grade C.
Salford City Council, Band B, £1,637 PA.

Our View

The property would suit couples, single persons or small famalies.

Location

Situated just a short distance from Moorside Train Station, Swinton Town Hall and Swinton Shopping Centre.

Ground Floor

Entrance Hall

Living Room

Kitchen / Dining Room

First Floor

Bedroom One

Bedroom Two

Bedroom Three

Bathroom

External

Council Tax
Salford City Council
Band B
£1,637 PA.

Floorplan

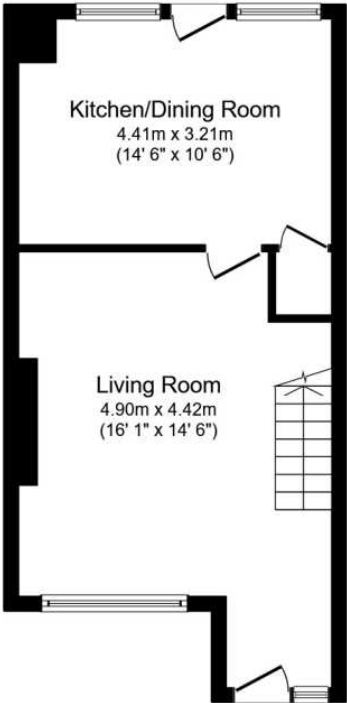
Your-Move.co.uk Ltd., 01864469, Newcastle House Albany Court, Newcastle Business Park, Newcastle Upon Tyne, NE4 7YB

All Measurements
All Measurements are Approximate.

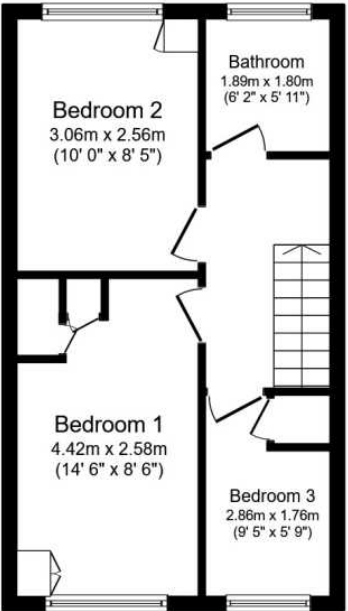
Laser Tape Clause
All measurements have been taken using a laser tape measure and therefore, may be subject to a small margin of error.

Floorplan Clause
Measurements are approximate. Not to Scale. For illustrative purposes only.

For full EPC please contact the branch.



Ground Floor



First Floor

Total floor area 76.0 sq. m. (818 sq. ft.) approx
This floor plan is for illustrative purposes only. It is not drawn to scale. Any measurements, floor areas (including any total floor area), openings and orientation are approximate. No details are guaranteed, they cannot be relied upon for any purpose and they do not form part of any agreement. No liability is taken for any error, omission or misstatement. A party must rely upon its own inspection(s).
Plan produced for Your Move. Powered by www.focalagent.com

We may refer you to recommended providers of ancillary services such as Conveyancing, Mortgages, Insurance and Surveying. We may receive a referral fee for recommending their services. You are not under any obligation to use the services of the recommended provider, which may also be an associated company of Your Move.