

Great North Road, Woodlands,  
Doncaster, South Yorkshire, DN6

£750 per month

Unfurnished



[your-move.co.uk](https://your-move.co.uk)



Great North Road, Woodlands, Doncaster, South Yorkshire, DN6  
£750 per month Unfurnished

This spacious two bed semi detached new build home is situated in a popular location in Woodlands and must be viewed early to fully appreciate the standard of accommodation on offer. The property briefly comprises of an lounge, kitchen two double bedrooms with en-suite to bedroom one and family bathroom. The property also benefits from off road parking plus front and rear gardens. Awaiting EPC Rating

Description

This spacious two bed semi detached new build home is situated in a popular location in Woodlands and must be viewed early to fully appreciate the standard of accommodation on offer. The property briefly comprises of an lounge, kitchen two double bedrooms with en-suite to bedroom one and family bathroom. The property also benefits from off road parking plus front and rear gardens. Awaiting EPC Rating

Location

Woodlands is approximately five miles to the north of Doncaster centre and has a good range of local amenities including shops, schools, supermarkets and has bus services to and from Doncaster town centre. There is a motorway access points for the A1M at junction 38 close by.

Agents Note

The driveway on this property is currently unfinished and should be completed by May 2022

Your-Move.co.uk Ltd., 01864469, Newcastle House Albany Court, Newcastle Business Park, Newcastle Upon Tyne, NE4 7YB

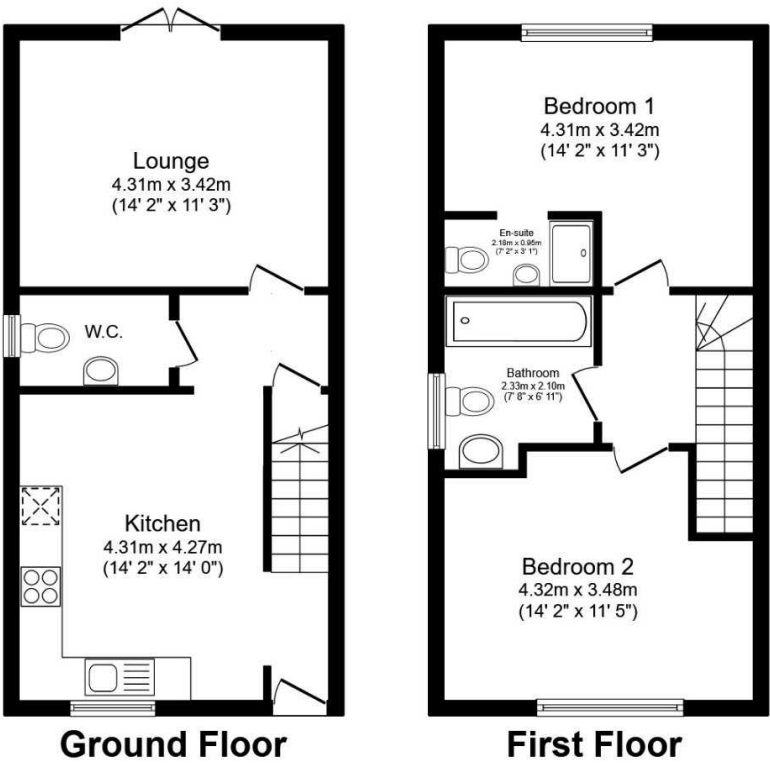
All Measurements  
All Measurements are Approximate.

Laser Tape Clause  
All measurements have been taken using a laser tape measure and therefore, may be subject to a small margin of error.

Floorplan Clause  
Measurements are approximate. Not to Scale. For illustrative purposes only.



For full EPC please contact the branch.



Total floor area 79.3 sq.m. (853 sq.ft.) approx  
This floor plan is for illustrative purposes only. It is not drawn to scale. Any measurements, floor areas (including any total floor area), openings and orientation are approximate. No details are guaranteed, they cannot be relied upon for any purpose and they do not form part of any agreement. No liability is taken for any error, omission or misstatement. A party must rely upon its own inspection(s).  
Plan produced for Your Move. Powered by www.focalagent.com

We may refer you to recommended providers of ancillary services such as Conveyancing, Mortgages, Insurance and Surveying. We may receive a referral fee for recommending their services. You are not under any obligation to use the services of the recommended provider, which may also be an associated company of Your Move.