

Haigh Road, Doncaster, South
Yorkshire, DN4

£725 per month

Part Furnished



your-move.co.uk

Doncaster T: 01302 340444



Haigh Road, Doncaster, South Yorkshire, DN4
£725 per month Part Furnished

This fantastic three bedroom home has spacious rooms and driveway parking plus enclosed rear garden.

Description
ZERO DEPOSIT GUARANTEE AVAILABLE...
A well presented three bedroom semi-detached home, comprising of porch, entrance hall, lounge with bay window, separate dining room, kitchen, utility room and downstairs WC. To the first floor there are three spacious bedrooms and family bathroom. Externally the property benefits from an enclosed rear garden with both paved and planted areas. To the front there is driveway parking.

VIEWING HIGHLY RECOMMENDED!

EPC Rating D
Council Tax Band A

Location
Balby has a range of local amenities which include shops, schools, pubs, church, supermarket and bus services to and from Doncaster town centre. Ideally located close to town, great for those that want to be near to a fantastic array of bars, restaurants and shops.

Lounge
11' x 10' (3.35m x 3.05m)

Kitchen
8' x 5'9" (2.44m x 1.75m)

Dining Room
11' x 11' (3.35m x 3.35m)

Utility Room
6'2" x 4'11" (1.88m x 1.5m)

Bedroom One
11'11" x 10'11" (3.63m x 3.33m)

We may refer you to recommended providers of ancillary services such as Conveyancing, Mortgages, Insurance and Surveying. We may receive a referral fee for recommending their services. You are not under any obligation to use the services of the recommended provider, which may also be an associated company of Your Move.

Bedroom Two
11'11" x 11' (3.63m x 3.35m)

Bedroom Three
6'9" x 6' (2.06m x 1.83m)

Bathroom
5'11" x 5'6" (1.8m x 1.68m)

Your-Move.co.uk Ltd., 01864469, Newcastle House Albany Court,
Newcastle Business Park, Newcastle Upon Tyne, NE4 7YB

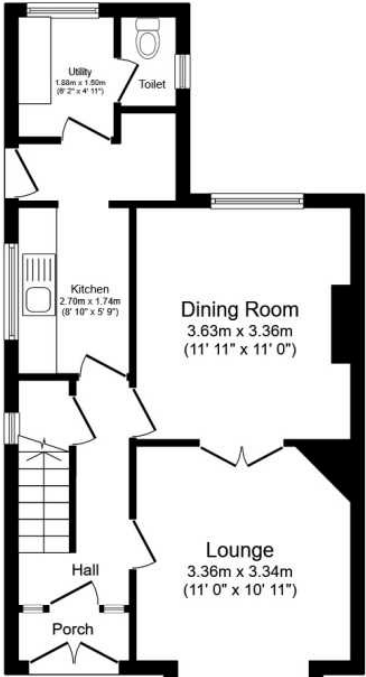
All Measurements
All Measurements are Approximate.

Laser Tape Clause
All measurements have been taken using a laser tape measure and therefore, may be subject to a small margin of error.

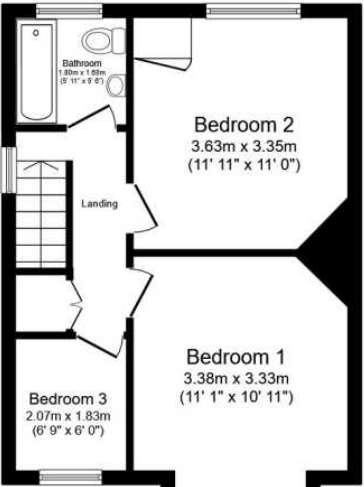
Floorplan Clause
Measurements are approximate. Not to Scale. For illustrative purposes only.



For full EPC please contact the branch.



Ground Floor



First Floor

Total floor area 83.5 sq.m. (899 sq.ft.) approx

This floor plan is for illustrative purposes only. It is not drawn to scale. Any measurements, floor areas (including any total floor area), openings and orientation are approximate. No details are guaranteed, they cannot be relied upon for any purpose and they do not form part of any agreement. No liability is taken for any error, omission or misstatement. A party must rely upon its own inspection(s).
Plan produced for Your Move. Powered by www.focalagent.com