



Lacy Close, Nettleham, Lincoln,
LN2

£1,200 per month

Unfurnished



your-move.co.uk

Lacy Close, Nettleham, Lincoln, LN2
£1,200 per month Unfurnished

This four bedroom detached house located in the popular village of Nettleham is available to rent mid-July 2022.

The accommodation on offer includes an entrance hall with cloakroom and storage cupboard. Bay fronted lounge with doors leading to the dining room.

The fitted breakfast kitchen benefits from a built in fridge/freezer, double oven and rear door.

There is a very light and spacious sun room offering further living accommodation.

Upstairs are 4 good sized bedrooms with two...

Lounge
0 x 0

Kitchen
0 x 0

Conservatory
0 x 0

Bedrooms
0 x 0

En Suite
0 x 0

Garden
0 x 0

Floorplan
0 x 0

Description

This four bedroom detached house located in the popular village of Nettleham is available to rent mid-July 2022.

The accommodation on offer includes an entrance hall with cloakroom and storage cupboard. Bay fronted lounge with doors leading to the dining room.

The fitted breakfast kitchen benefits from a built in fridge/freezer, double oven and rear door.

There is a very light and spacious sun room offering further living accommodation.

Upstairs are 4 good sized bedrooms with two en suites and a family bathroom.

The property further benefits from gas central heating, Upvc windows and doors throughout and views over a paddock and Mulsanne park to the rear of the property.

Externally the rear garden is enclosed. The driveway provides parking for two vehicles and provides access to the garage.

This property really must be viewed to be appreciated the location and presentation on offer.

The village of Nettleham has ample shops, schools and local pubs.

EPC Rating D - Holding Deposit £276 - Security Deposit £1384 - Available 11/07/2022.

Your-Move.co.uk Ltd., 01864469, Newcastle House Albany Court, Newcastle Business Park, Newcastle Upon Tyne, NE4 7YB

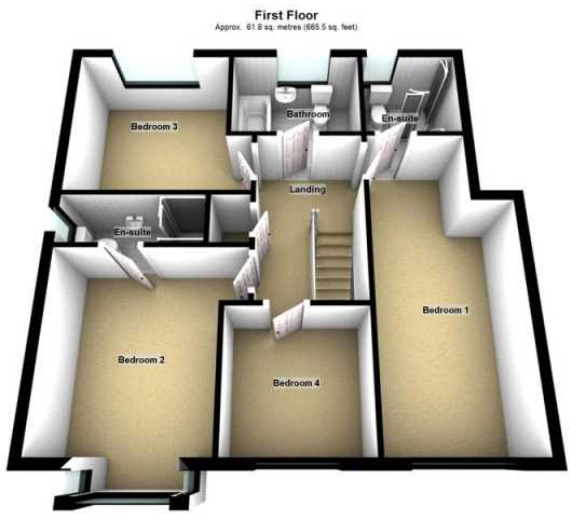
All Measurements
All Measurements are Approximate.

Laser Tape Clause
All measurements have been taken using a laser tape measure and therefore, may be subject to a small margin of error.

Floorplan Clause
Measurements are approximate. Not to Scale. For illustrative purposes only.



For full EPC please contact the branch.



Total area: approx. 135.3 sq. metres (1455.9 sq. feet)