

Port Road, Palnackie, Castle Douglas, Dumfries and Galloway

**Offers Over: £160,000**

**Freehold**

 **YOUR MOVE**

[your-move.co.uk](http://your-move.co.uk)



Port Road, Palnackie, Castle Douglas, Dumfries and Galloway

**Offers Over: £160,000 Freehold**

If you are looking for a spacious family home that is set within a small village location then look no further. Arranged over four levels you have generous sized rooms with flexible living and all for an attractive price. Call now to book your viewing appointment with the sales team before it is too late. EPC = E

**Description**

Delighted to offer to the market we have this spacious terraced home set perfectly within a small popular village location. Offering fantastic flexible living within the home this is a perfect opportunity for a young family. The generous accommodation comprises entrance hall to the front bedroom / public room and bedroom. Stairs lead down to the spacious fitted kitchen / dining / living room to the lower level. The upper level offers another good size double bedroom with the family bathroom wc. The top level offers the final double bedroom. Externally you have a private enclosed garden area to the rear and parking is found on street to the front. To appreciate fully viewing is a must.

**Location**

Palnackie is a small picturesque village that benefits from having local shop/post office, public house, tea room, modern village hall and school. Close by is the market town of Castle Douglas offering wider range of shops and services. Dalbeattie is only 3 miles away and the whole area is renowned for its natural beauty, outdoor pursuits and facilities.

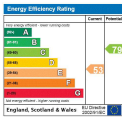
Your-Move.co.uk Ltd., 01864469, Newcastle House Albany Court, Newcastle Business Park, Newcastle Upon Tyne, NE4 7YB

All Measurements  
All Measurements are Approximate.

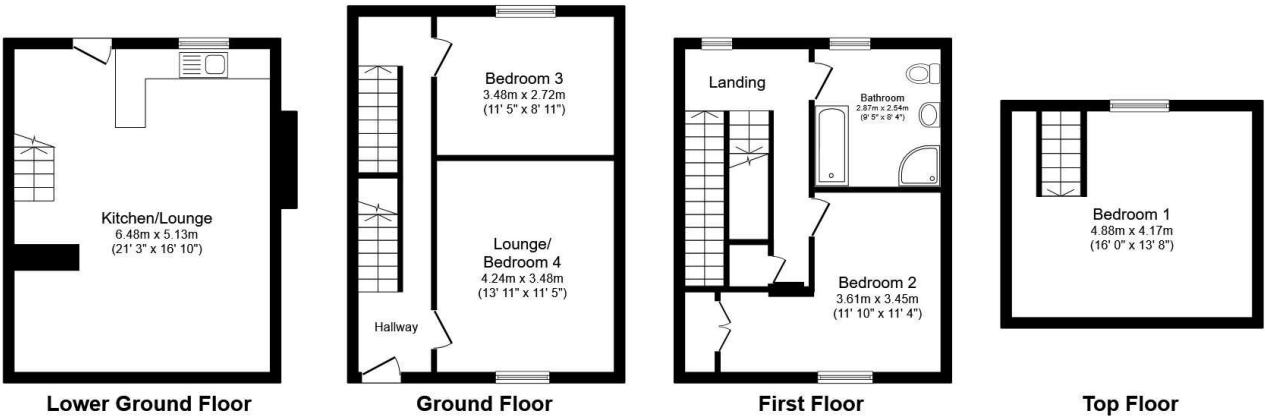
Laser Tape Clause  
All measurements have been taken using a laser tape measure and therefore, may be subject to a small margin of error.

Floorplan Clause  
Measurements are approximate. Not to Scale. For illustrative

purposes only.



For full EPC please contact the branch.



Total floor area 122.9 sq.m. (1,323 sq.ft.) approx

This floor plan is for illustrative purposes only. It is not drawn to scale. Any measurements, floor areas (including any total floor area), openings and orientation are approximate. No details are guaranteed, they cannot be relied upon for any purpose and they do not form part of any agreement. No liability is taken for any error, omission or misstatement. A party must rely upon its own inspection(s).  
Plan produced for Your Move. Powered by [www.focalagent.com](http://www.focalagent.com)

We may refer you to recommended providers of ancillary services such as Conveyancing, Mortgages, Insurance and Surveying. We may receive a referral fee for recommending their services. You are not under any obligation to use the services of the recommended provider, which may also be an associated company of Your Move.